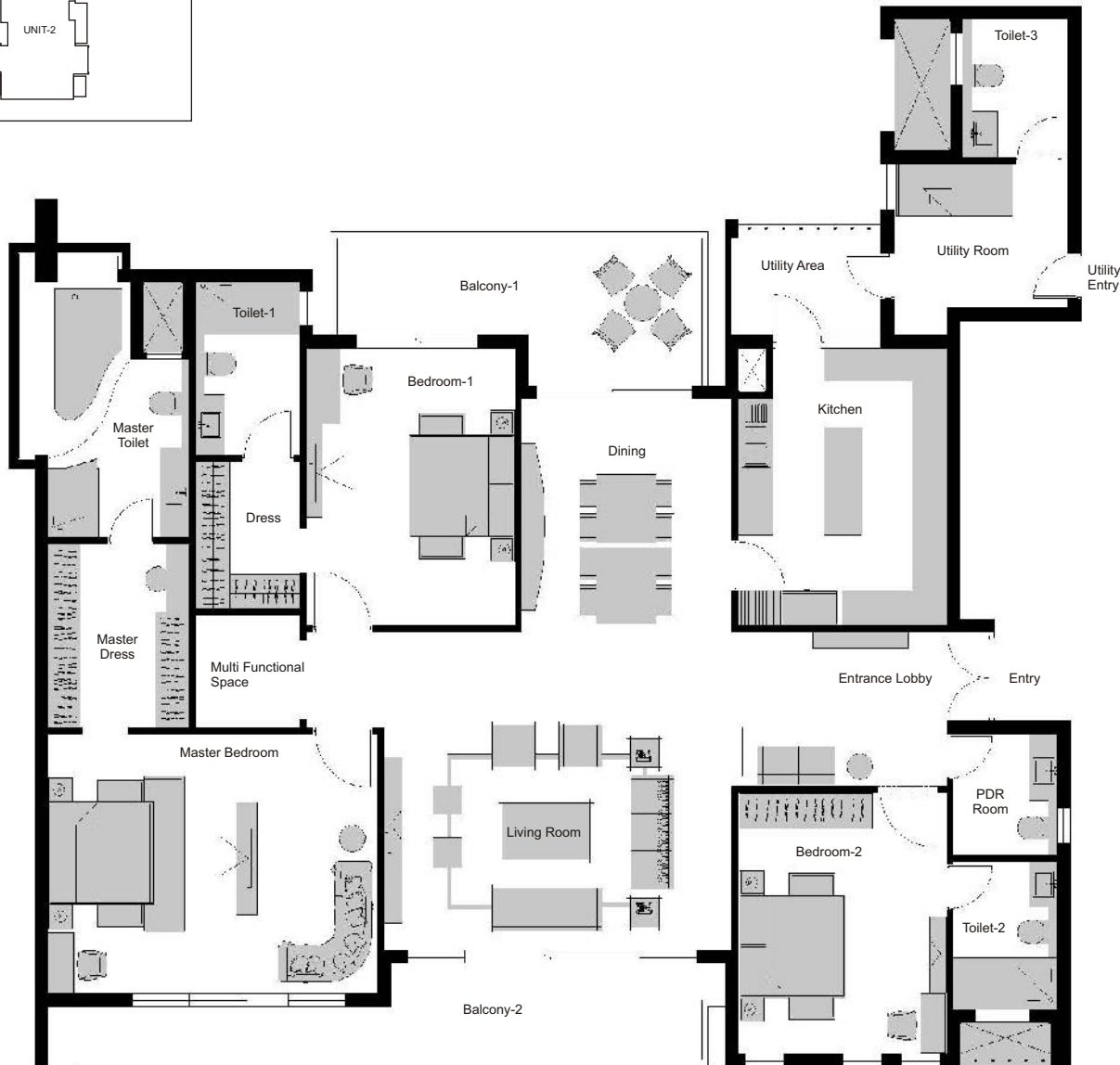
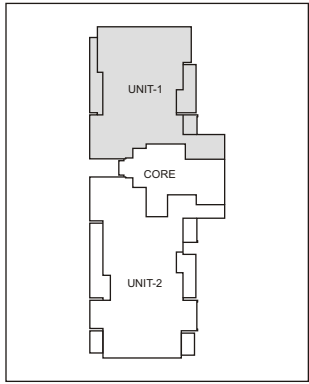


Experion Windchants Gurgaon Floor Plan, 3BHK 3650

Waving Teak (3 BHK) Unit Plan

Typical Unit Plan - Unit 1 (3 BHK)

(11th, 14th, 19th, 20th, 22nd) Sale Area: 3650 (sq. ft.)



	MM	Feet-Inch
Master Bedroom	6025 x 4565	19'-0" x 15'-0"
Bedroom-1	3650 x 4880	12'-0" x 16'-0"
Bedroom-2	3655 x 4580	12'-0" x 15'-0"
Living Room	6100 x 5600	20'-0" x 18'-4"
Balcony-1	6635 x 2705	21'-9" x 9'-0"
Balcony-2	11125 x 1800	36'-6" x 6'-0"
Dining	3700 x 4095	12'-2" x 13'-5"

	MM	Feet-Inch
Kitchen	3655 x 4880	12'-0" x 16'-0"
Master Dress	2485 x 3210	8'-2" x 10'-6"
Dress	1830 x 2575	6'-0" x 8'-5"
Entrance Lobby	3770 x 2720	12'-5" x 8'-11"
PDR Room	1830 x 2130	6'-0" x 7'-0"
Master Toilet	2935 x 4945	9'-8" x 16'-3"
Toilet-1	1830 x 3045	6'-0" x 10'-0"

	MM	Feet-Inch
Toilet-2	1830 x 2590	6'-0" x 8'-6"
Toilet-3	1830 x 2420	6'-0" x 8'-0"
Multi Functional Space	1830 x 1970	6'-0" x 6'-5"
Utility Area	2730 x 1790	8'-11" x 5'-10"
Utility Room	3050 x 2535	10'-0" x 8'-4"

Disclaimer :

1. The furniture and its arrangement is indicative and not included in the apartment. 1sqm = 10.764 sft
2. All plans, specifications, artistic renderings and images as shown in this page are only indicative and are subject to change as may be decided by the company or directed by any competent authority in the best interests of the development. Soft furnishing, furniture and gadgets do not form a part of the offering.